

*Kees Klomp, programmamanager AGENCY!
Windesheim Zwolle*



It's the Economy stupid!

The Earth is in a death spiral. It will take radical action to save us

George Monbiot



Climate breakdown could be rapid and unpredictable. We can no longer tinker around the edges and hope minor changes will avert collapse

- Since 2015, the richest 1% has owned more wealth than the rest of the planet.³
- Eight men now own the same amount of wealth as the poorest half of the world.⁴
- Over the next 20 years, 500 people will hand over \$2.1 trillion to their heirs – a sum larger than the GDP of India, a country of 1.3 billion people.⁵
- The incomes of the poorest 10% of people increased by less than \$3 a year between 1988 and 2011, while the incomes of the richest 1% increased 182 times as much.⁶
- A FTSE-100 CEO earns as much in a year as 10,000 people in working in garment factories in Bangladesh.⁷
- In the US, new research by economist Thomas Piketty shows that over the last 30 years the growth in the incomes of the bottom 50% has been zero, whereas incomes of the top 1% have grown 300%.⁸
- In Vietnam, the country's richest man earns more in a day than the poorest person earns in 10 years.⁹

Just 100 companies responsible for 71% of global emissions, study says

A relatively small number of fossil fuel producers and their investors could hold the key to tackling climate change



Inequality Is Rising Across the Globe — and skyrocketing in the U.S.



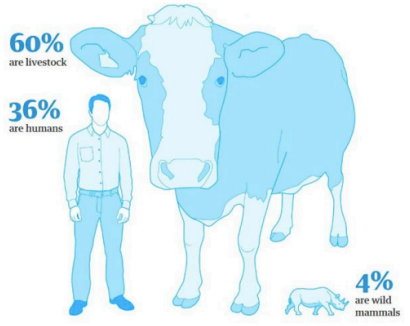
Humans just 0.01% of all life but have destroyed 83% of wild mammals - study

Groundbreaking assessment of all life on Earth reveals humanity's surprisingly tiny part in it as well as our disproportionate impact



Earth has lost a third of arable land in past 40 years, scientists say

Experts point to damage caused by erosion and pollution, raising major concerns about degraded soil amid surging global demand for food



Every time we destroy a patch of rainforest, this changes the future of Earth's geology. So far, we have transformed more than 50 per cent of Earth's land area for our own purposes. **Deforestation**, farming, drilling, mining, landfills, dam-building and coastal reclamation are all having widespread effects on sedimentary processes, disrupting how layers of rock are laid down, which will be detectable thousands of years in the future.

Richest 1% on target to own two-thirds of all wealth by 2030

World leaders urged to act as anger over inequality reaches a 'tipping point'



Economics' failure over destruction of nature presents 'extreme risks'

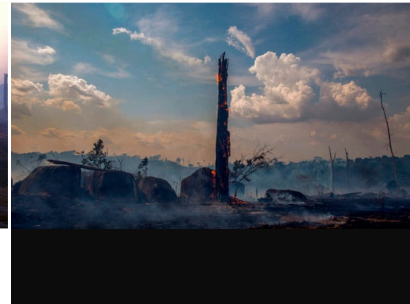
New measures of success needed to avoid catastrophic breakdown, landmark review finds



The world is being put at "extreme risk" by the failure of economics to take account of the rapid depletion of the natural world and needs to find new measures of success to avoid a catastrophic breakdown, a landmark review has concluded.

Amazon rainforest 'close to irreversible tipping point'

Forecast suggests rainforest could stop producing enough rain to sustain itself by 2021

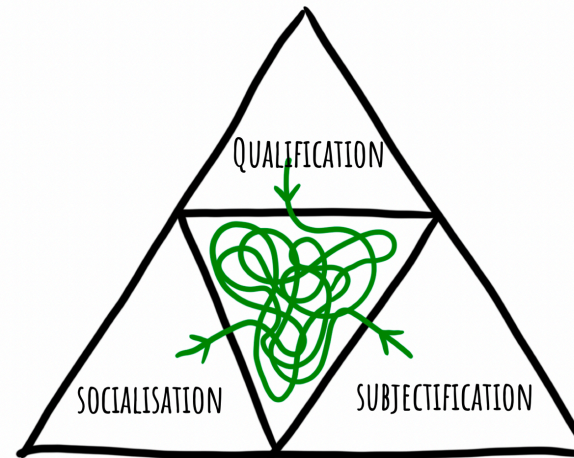


Rising sea levels threaten hundreds of millions -- and it's much worse than we thought

Onderzoeksuitkomsten lectoraat Betekeniseconomie Hogeschool Rotterdam



Houding is dominant/bepalend



Houding vereist nieuwe didactiek & pedagogie

QUALIFICATION

FUNCTIONAL

TRANSFER
KNOWLEDGE

MARKET-FOCUS

EDUCATION
ABOUT
CHANGE

SOCIALISATION

CULTURAL

STEER
SKILLS

SOCIETY-FOCUS

EDUCATION
FOR
CHANGE

SUBJECTIFICATION

EXISTENTIAL

EXPERIENCE
MEANING

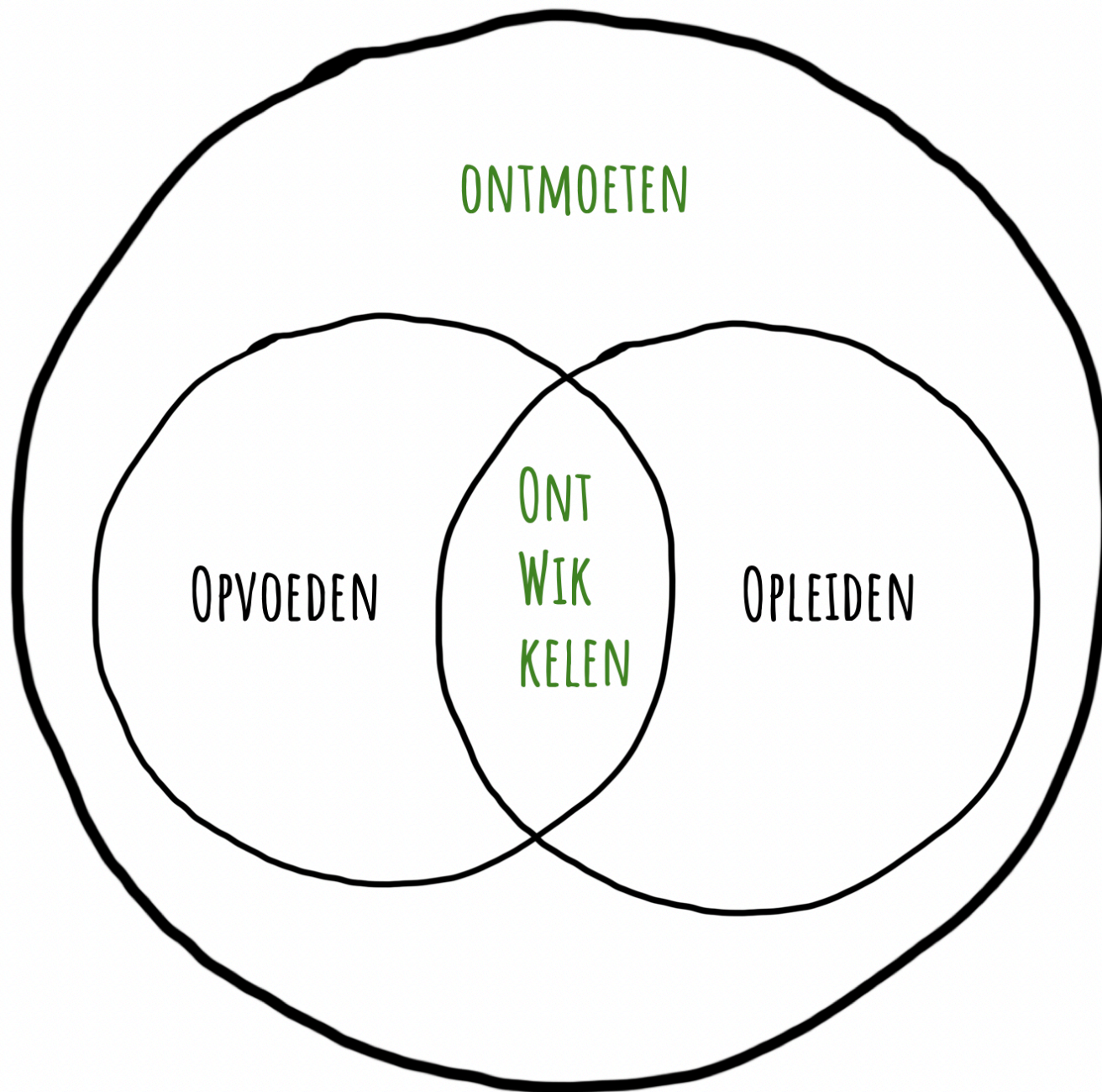
PERSONAL FOCUS

CHANGE
AS
EDUCATION

Beginnelsen

Wereldgericht Economisch

Onderwijs



ONTMOETEN

OPVOEDEN

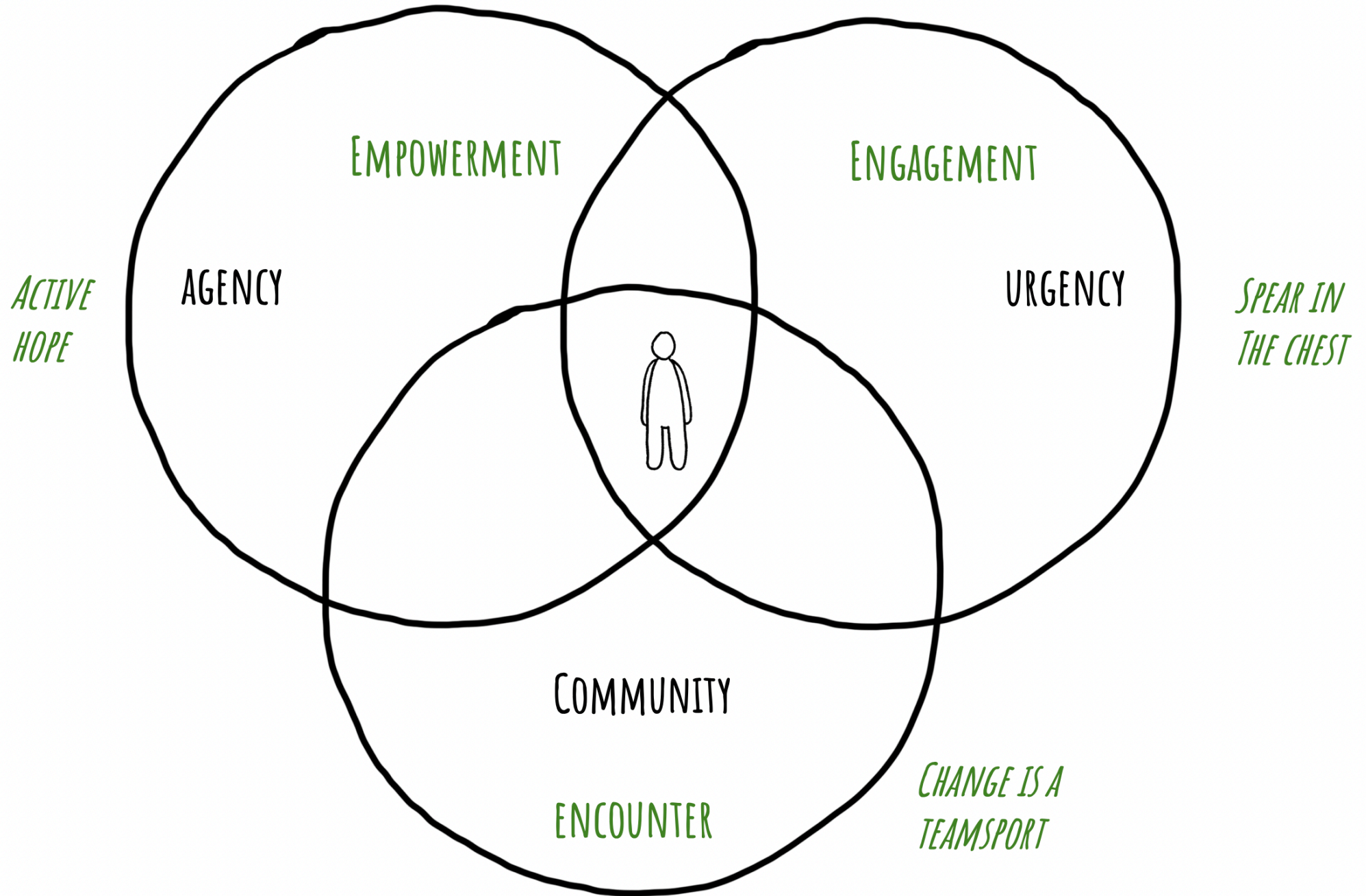
ONT
WIK
KELEN

OPLEIDEN

INDIVIDUATIE
BINNENWERELD
ZELFKENNIS

IMPACT
BUITENWERELD
MAATSCHAPPIJLEER/
NATUURWETENSCHAP

INKOMEN
VAKWERELD
VAKVAARDIGHEDEN

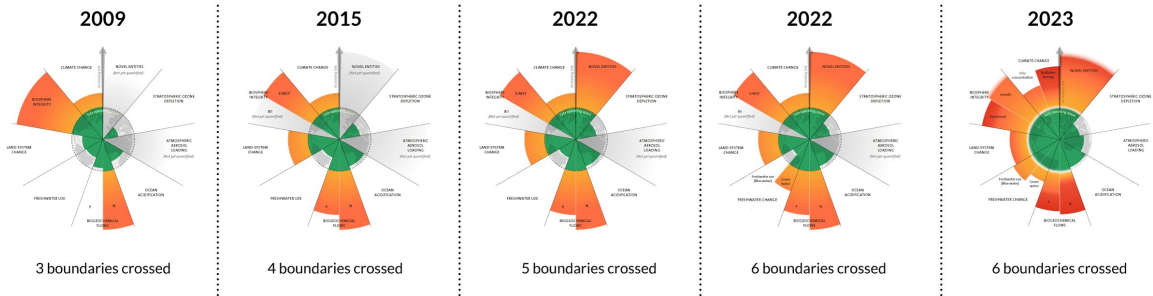


AGENCY!

Verandertheorie

**1) Urgency = Immersie =
Internalisatie**

Earth beyond six of nine planetary boundaries



Earth may have breached seven of nine planetary boundaries, health check shows

Ocean acidification close to critical threshold, say scientists, posing threat to marine ecosystems and global liveability

Almost Half of Earth's Vital Signs Are Now 'Code Red', Scientists Warn

ENVIRONMENT 29 October 2022 By DAVID NIELD



World's top climate scientists expect global heating to blast past 1.5C target

Exclusive: Planet is headed for at least 2.5C of heating with disastrous results for humanity, poll of hundreds of scientists finds

Top scientists warn of 'ghastly future of mass extinction' and climate disruption

Sobering new report says world is failing to grasp the extent of threats posed by biodiversity loss and the climate crisis

Ben Ehrenreich / March 18, 2021

We're Hurling Toward Global Suicide

Why we must do everything differently to ensure the planet's survival

Amazon rainforest reaching tipping point, researchers say

ENVIRONMENT

Why biodiversity loss hurts humans as much as climate change

A UN-backed report says a million species are at risk of extinction, and warns biodiversity loss and failure to conserve ecosystems has catastrophic effects on people as well as nature.

The economic commitment of climate change

[Maximilian Kotz](#), [Anders Levermann](#) & [Leonie Wenz](#) 

Abstract

Global projections of macroeconomic climate-change damages typically consider impacts from average annual and national temperatures over long time horizons^{1,2,3,4,5,6}. Here we use recent empirical findings from more than 1,600 regions worldwide over the past 40 years to project sub-national damages from temperature and precipitation, including daily variability and extremes^{7,8}. Using an empirical approach that provides a robust lower bound on the persistence of impacts on economic growth, we find that the world economy is committed to an income reduction of 19% within the next 26 years independent of future emission choices (relative to a baseline without climate impacts, likely range of 11–29% accounting for physical climate and empirical uncertainty). These damages already outweigh the mitigation costs required to limit global warming to 2 °C by sixfold over this near-term time frame and thereafter diverge strongly dependent on emission choices. Committed damages arise

Global economy could face 50% loss in GDP between 2070 and 2090 from climate shocks, say actuaries

Exclusive: Report by risk experts says previous assessments ignored severe effects of climate crisis

Study: Pollution kills 9 million a year, costs \$4.6 trillion



Ecological Economics

Volume 224, October 2024, 108284



Banking on ecosystem services

[Luis Mundaca](#)  , [Jan-Niklas Heintze](#)

Despite numerous public and/or private initiatives, banks have been slow to evaluate and integrate their dependency on ES, and related risks, into their operations and performance. Using data from the ten largest European banks, we estimate that for every dollar of equity holding, 26 cents are potentially exposed to high ES dependencies. This figure should be regarded as a lower estimate of the total banks' exposure to ES dependency. To make progress, we argue that banks must become champions of ES to ensure their own resilience and financial sustainability. Governance plays a key role, and we suggest several measures to accelerate this transition.

Nature degradation could cause a 12% loss to UK GDP

CLIMATE CHANGE

ECONOMICS

ENVIRONMENT

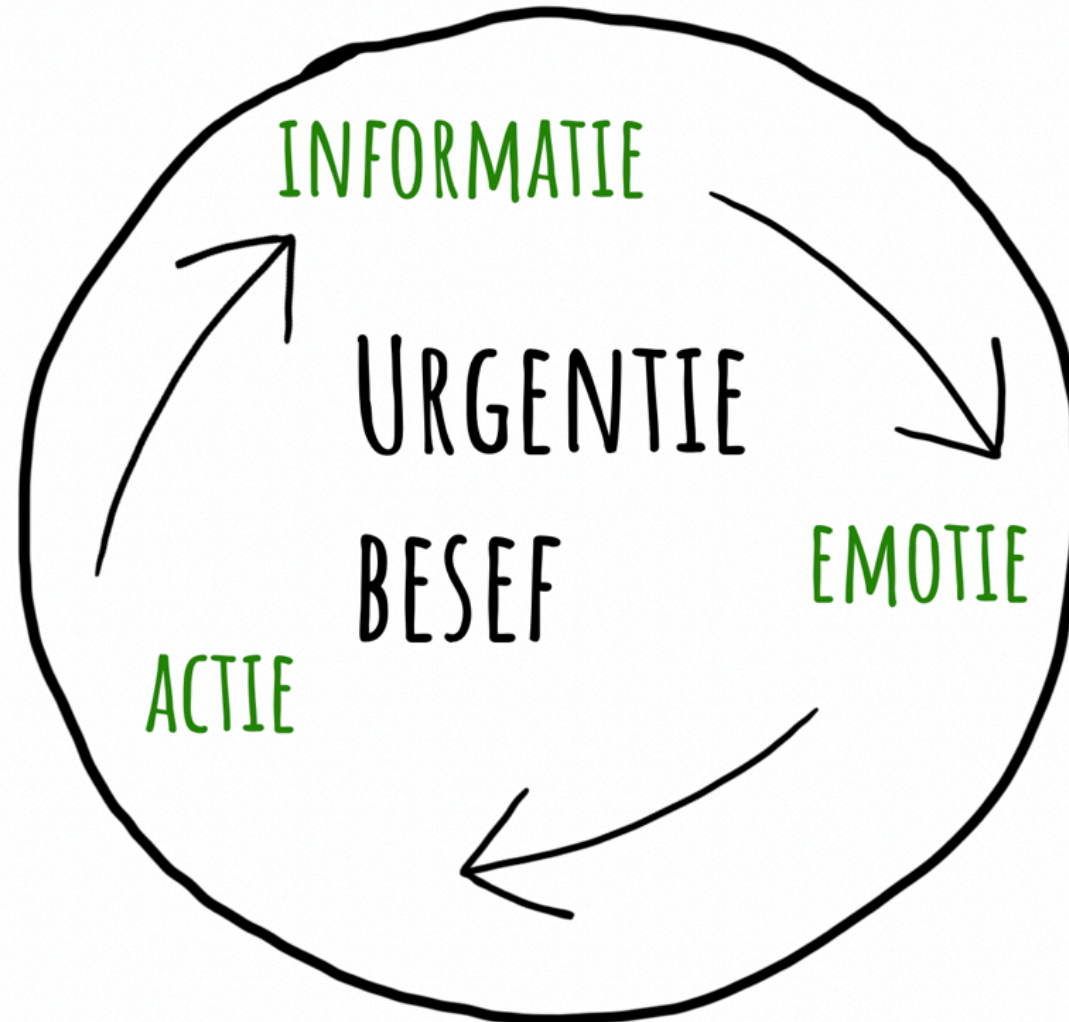
RESEARCH

SOCIAL SCIENCES

New research has found that damage to the natural environment is slowing the UK economy, and could lead to an estimated 12% reduction to GDP in

The deterioration of the UK's natural environment could lead to an estimated 12% loss to GDP, according to new analysis. In comparison, the financial crisis of 2008 took around 5%¹ off the value of the UK GDP, while the Covid-19 pandemic cost the UK up to 11%² of its GDP in 2020.

Urgentiebesef



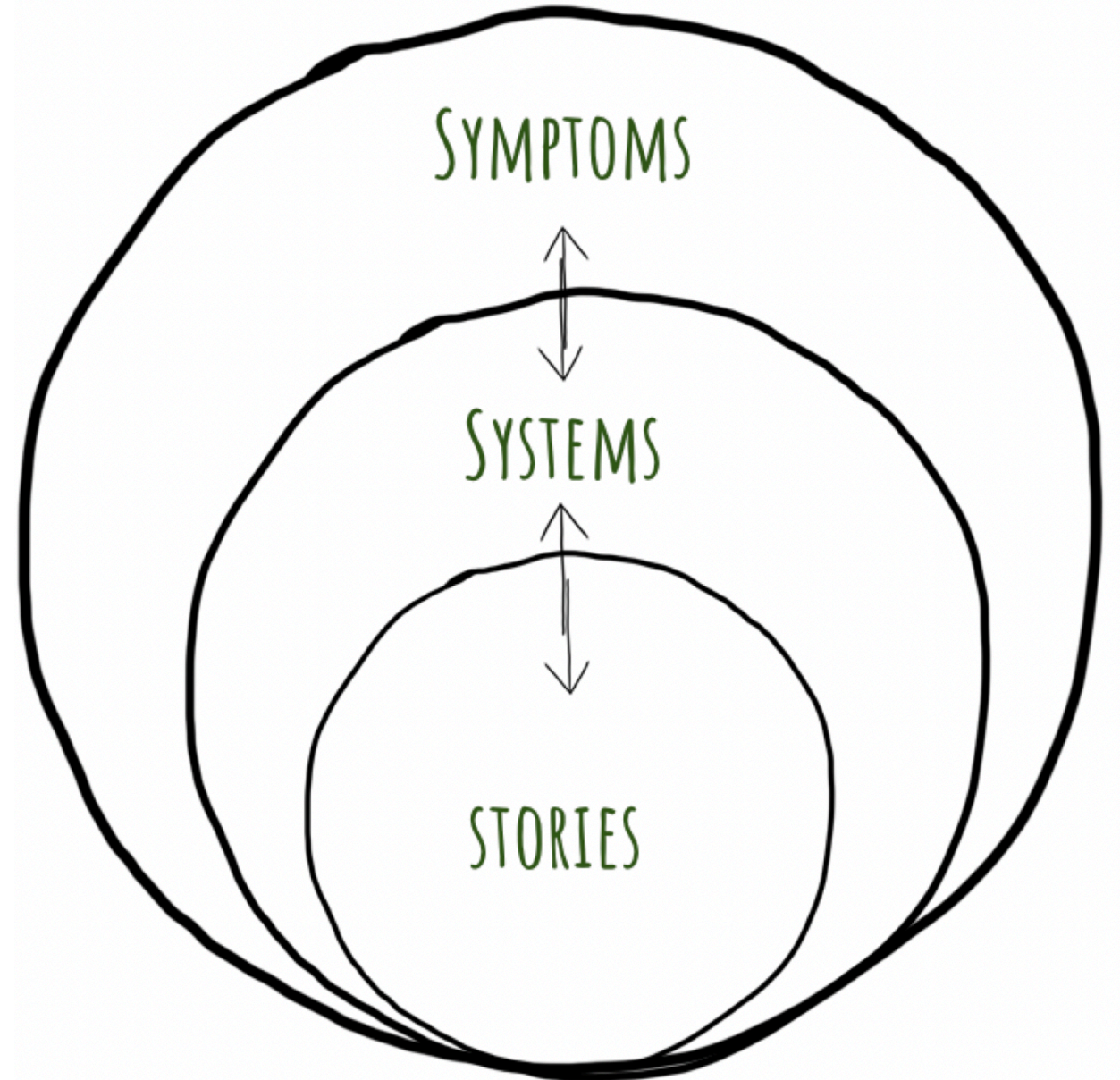
**2) Agency = Dissolutie =
Ontwerpfictie**



Eisenstein

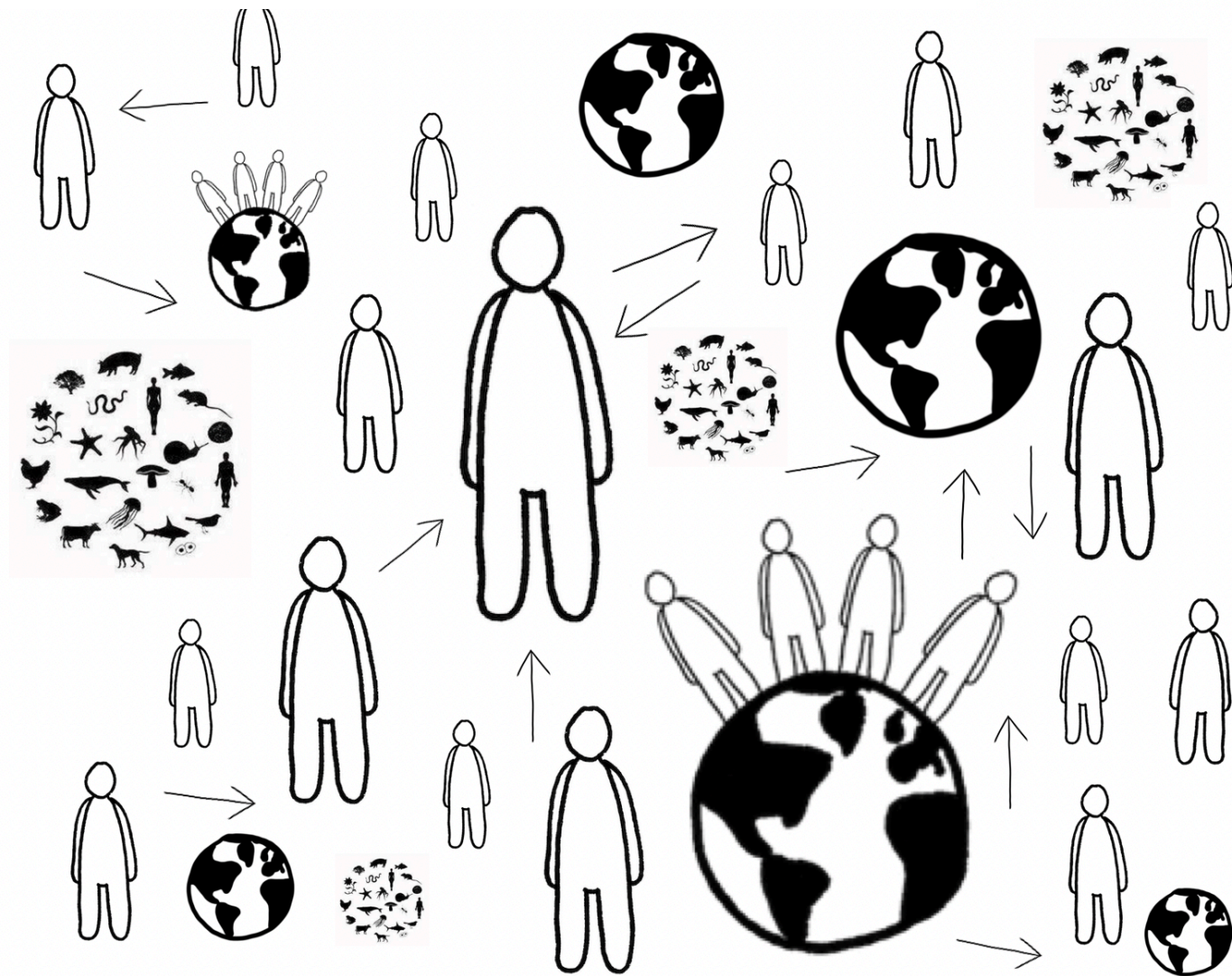
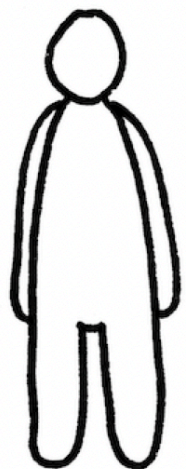
*'Symptoms
rest on top of
Systems*

*Systems
rest on top of
Stories'*



Nieuwe Verhalen

Intervidualisme (in plaats van individualisme)



Waarderen (in plaats van behoeven)

HOMO ECONOMICUS

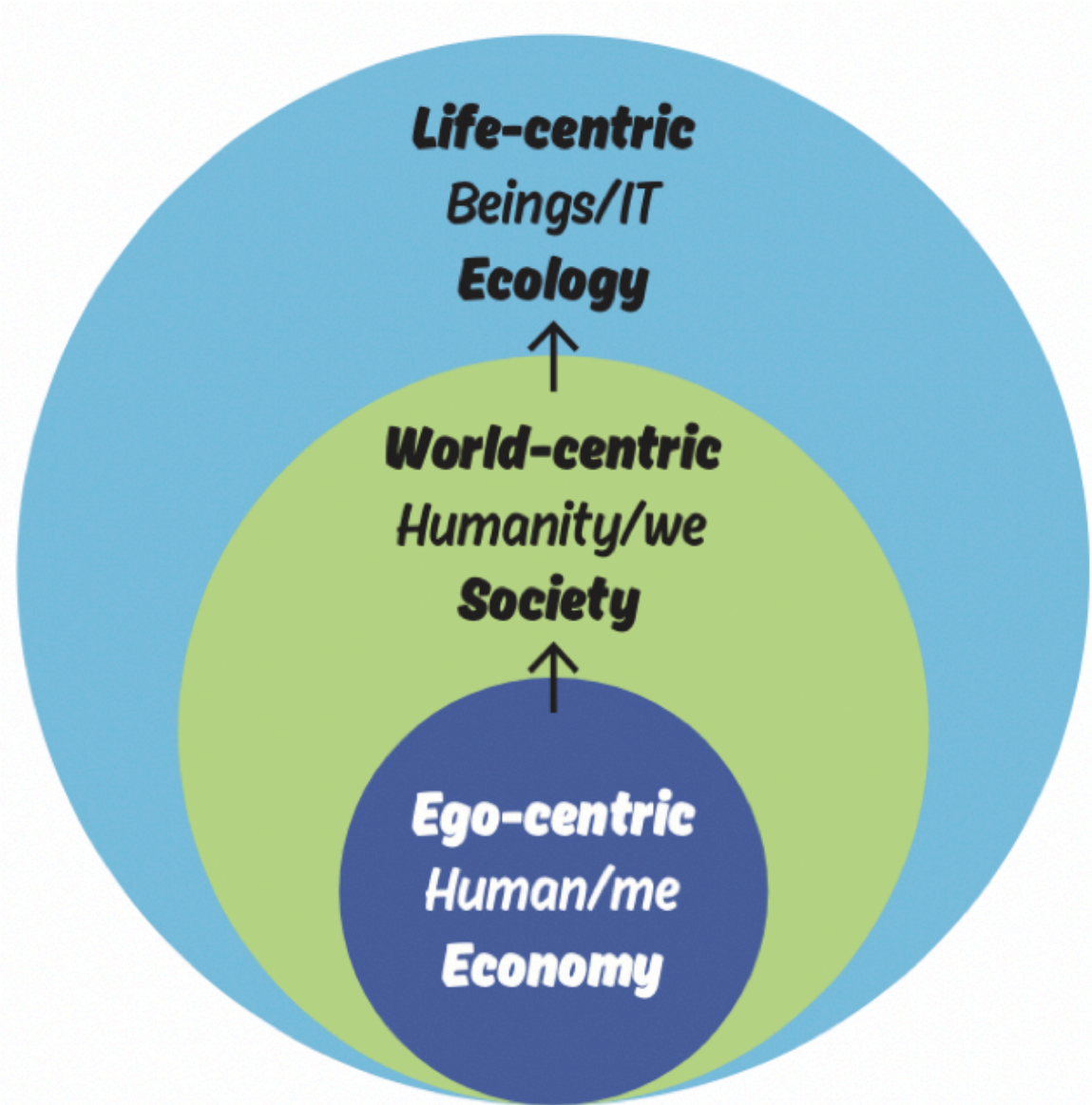


HOMO FLORENS

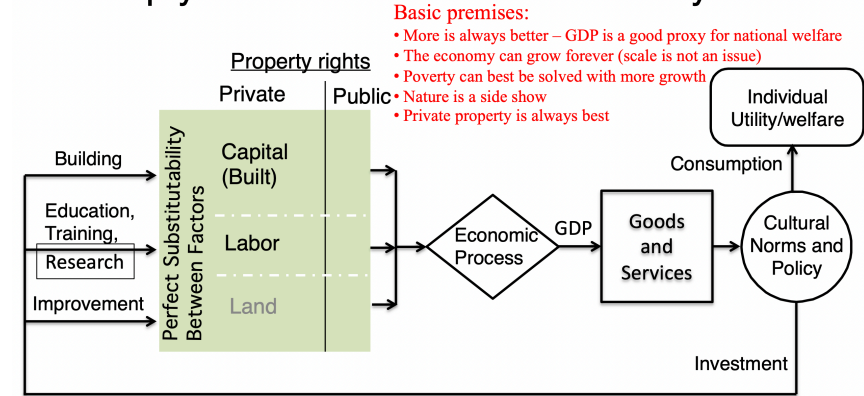


Nieuwe Systemen

Ecologisch (Buitenwereld)

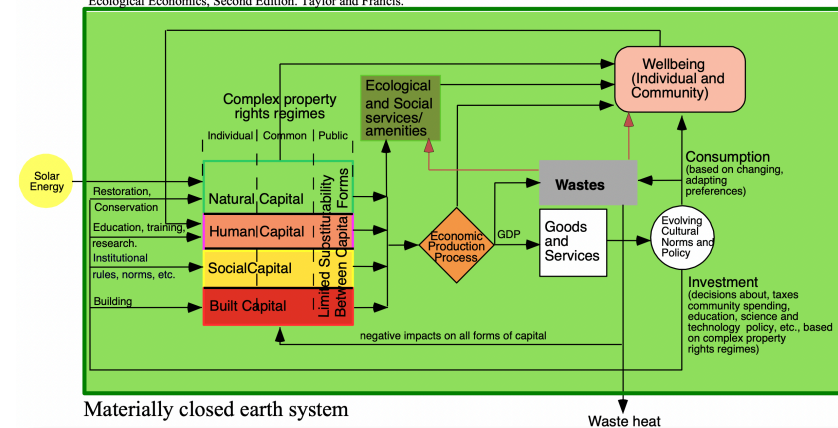


“Empty World” Vision of the Economy



“Full World” Vision of the Whole System

From: Costanza, R., J. C. Cumberland, H. E. Daly, R. Goodland, R. Norgaard, I. Kubiszewski, and C. Franco. 2014. An Introduction to Ecological Economics, Second Edition. Taylor and Francis.



Existentieel (Binnenwerelds)

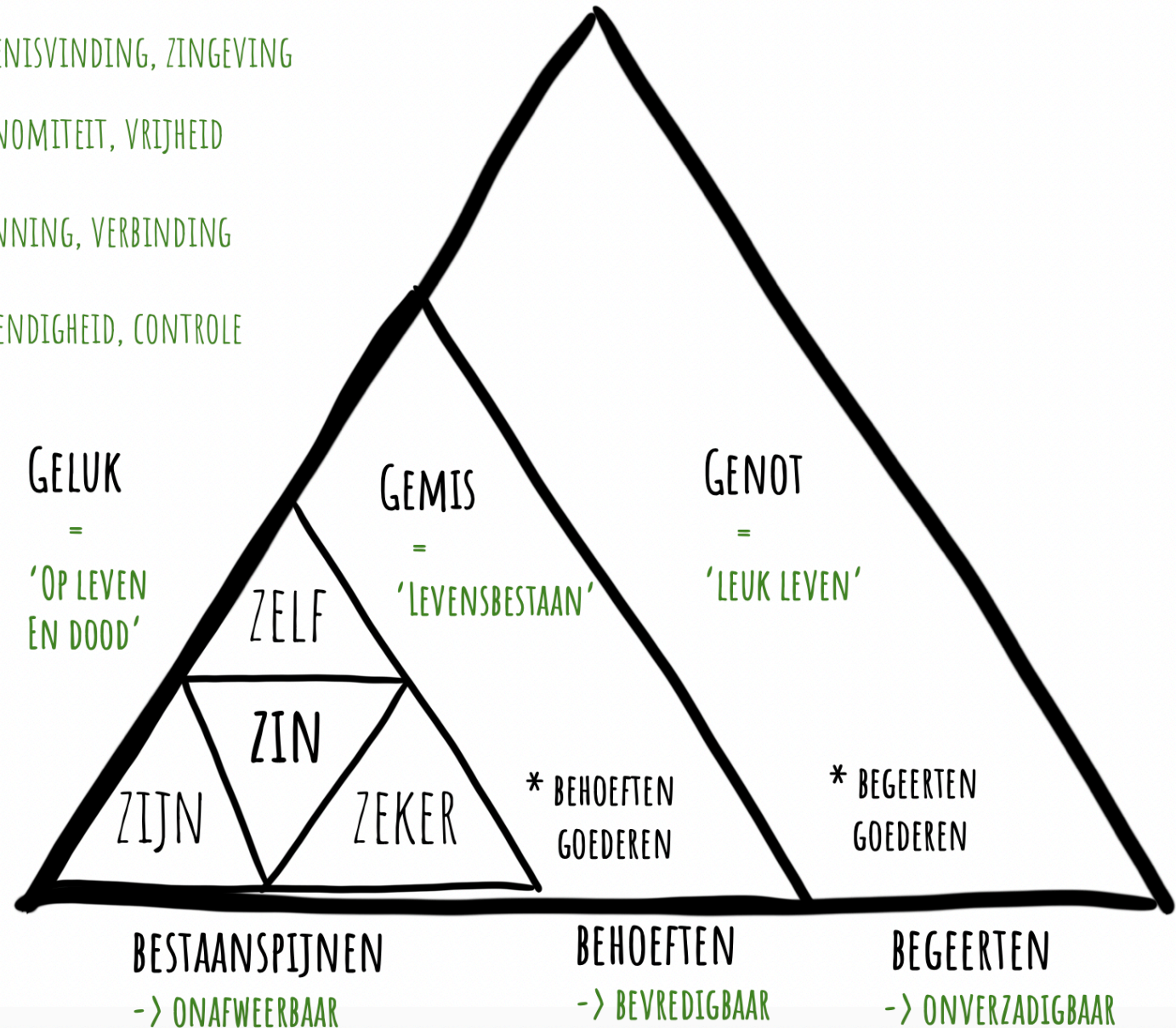
DE MENSELIJKE CONDITIE:

ZIN = BETEKENISVINDING, ZINGEVING

ZELF = AUTONOMITEIT, VRIJHEID

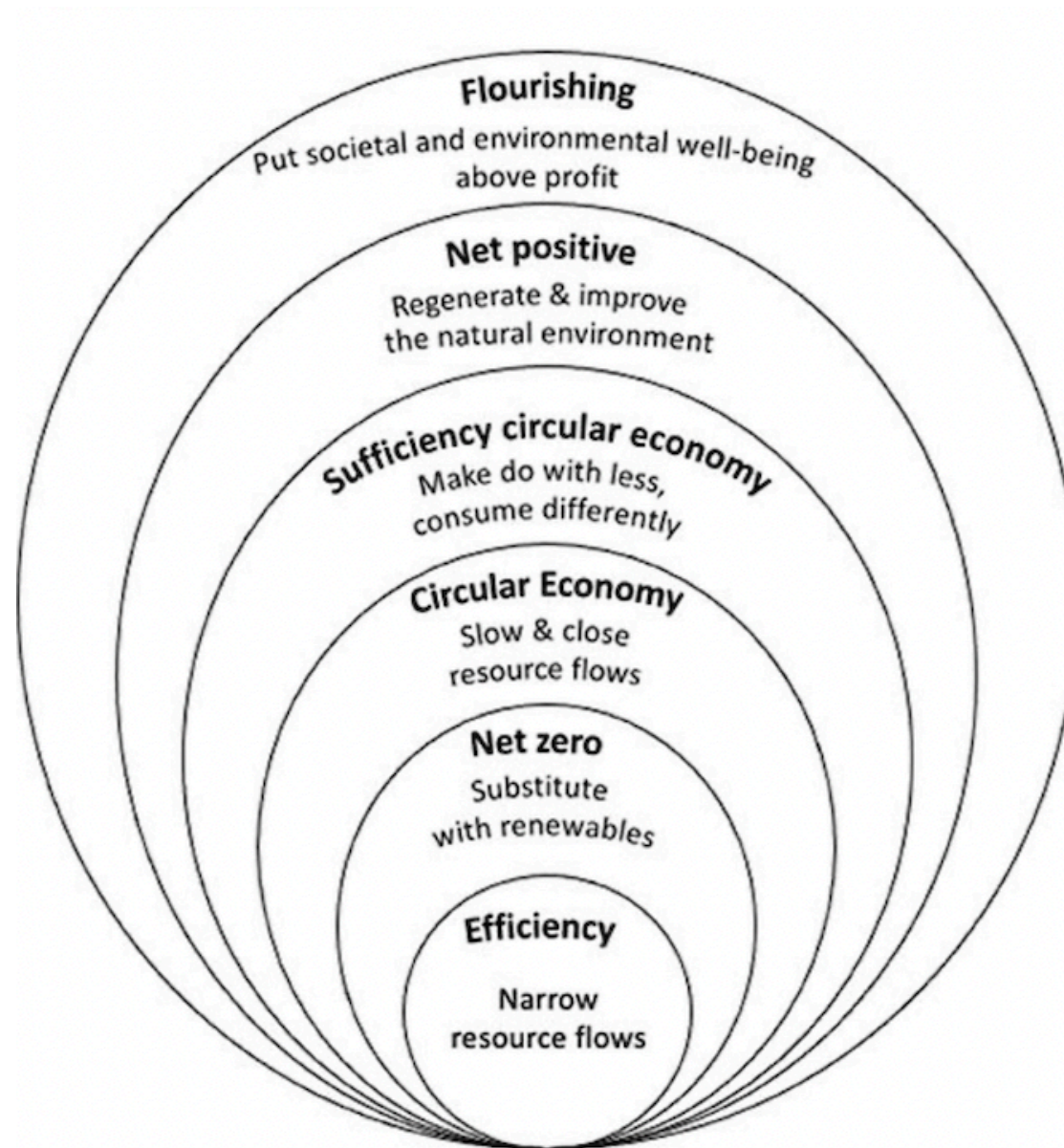
ZIJN = ERKENNING, VERBINDING

ZEKER = BESTENDIGHEID, CONTROLE



Nieuwe Symptomen

Florereren (in plaats van groeien)

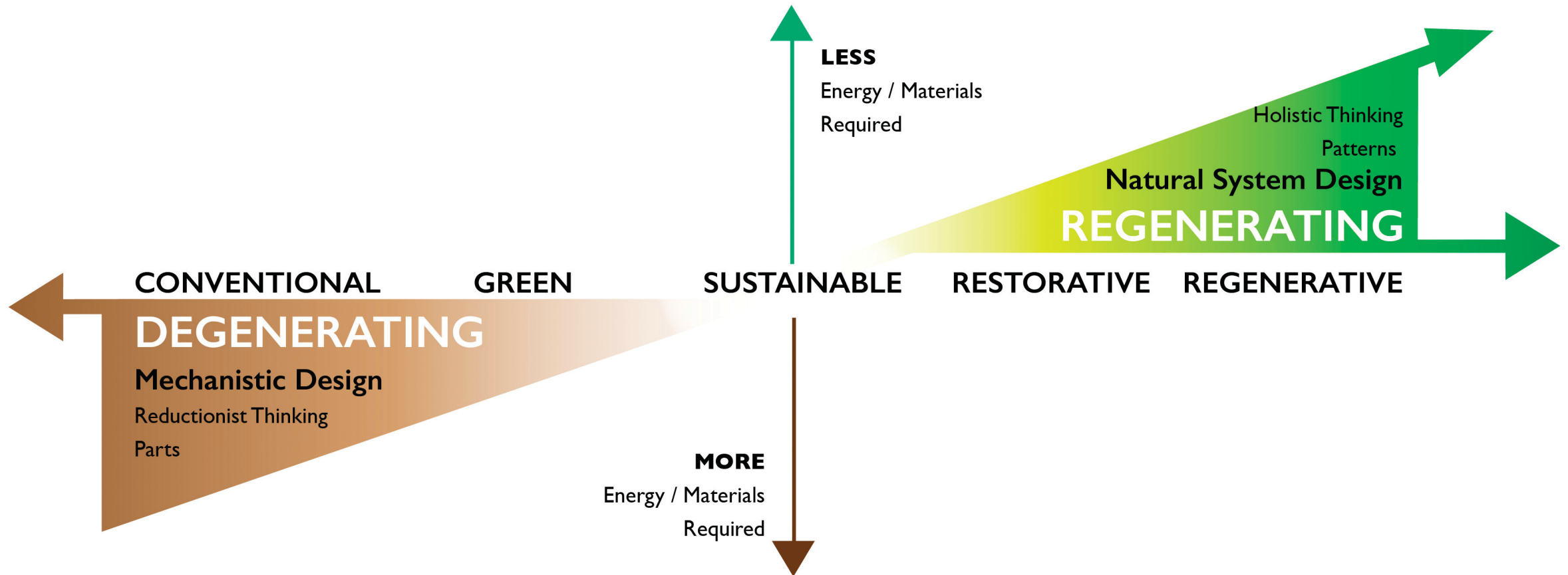


Bron: Prof. Nancy Bocken

Thriveability (in plaats van Sustainability)

AN ECONOMY

Place - Culture - Enterprise - Government - Commons

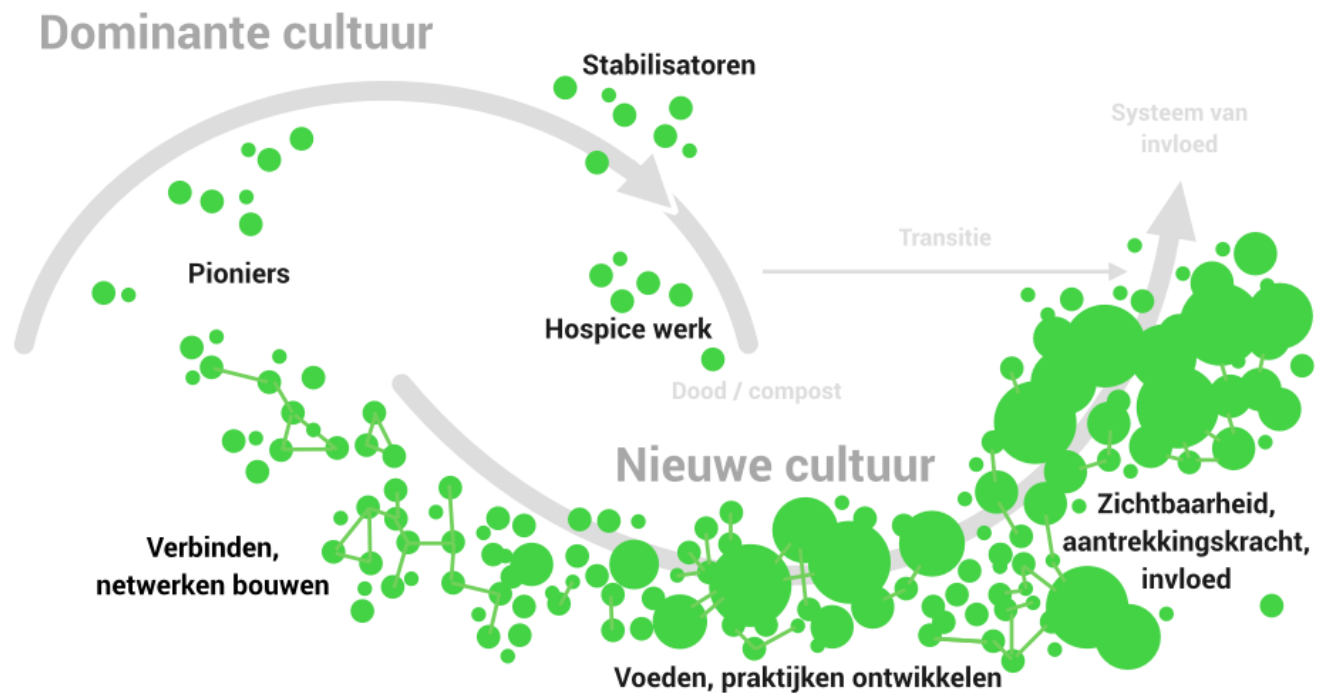


Handelingsperspectief



3)

**Community = Amplitie =
Prefiguratie**



YOU NEVER CHANGE SOMETHING
 BY FIGHTING THE EXISTING REALITY.
 TO CHANGE SOMETHING
 BUILD A NEW MODEL
 THAT MAKES THE EXISTING MODEL OBSOLETE

R. BUCKMISTER FULLER

Voorleverschap & Prefiguratie

Transformations to an equitable and sustainable world where all life can thrive will not happen through wishful thinking and hope. On the contrary, **agency and action are essential to realizing impacts.**

When actions of individuals **embody universal values of equity, dignity, fairness and compassion for all**, new patterns can be created.

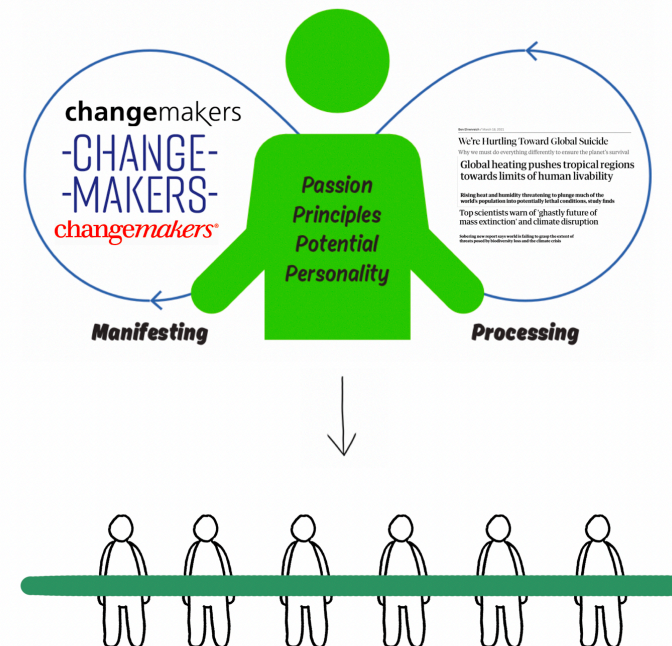
When we embrace our complementary identities as both individuals and collectives, **we can generate patterns that ripple, resonate and replicate** at all scales.

You matter much more than you think. Social change is about being a different paradigm.

Prof. Karen O'Brien

'Create, through experimentation in the present, the real methods of organization and association that people in the future might use to achieve the states of affairs that characterize an anarchist society'

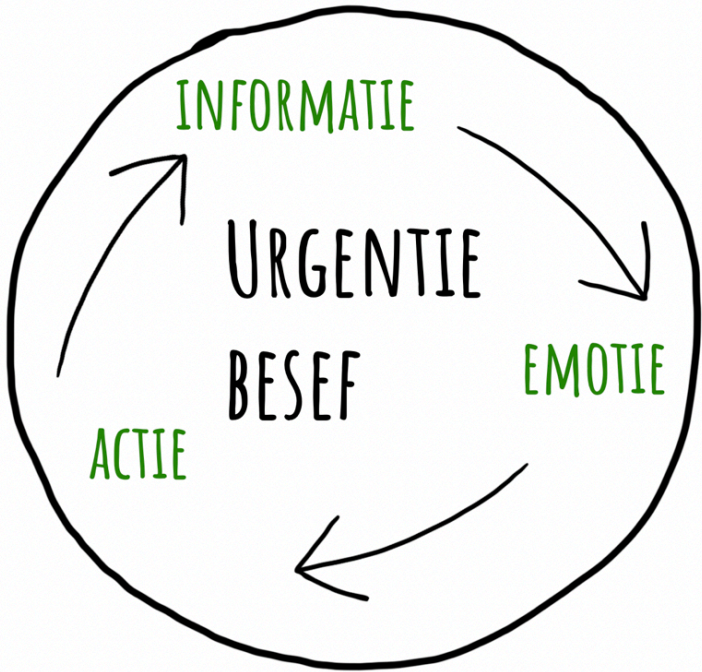
Zoe Baker



Gemeenschapszin



IMMERSIE



DISSOLUTIE



AMPLITIE

